

■ Stability ■ Precision ■ Optimized investment ■ Short loading/unloading time ■ Full data compatibility

# Electronic Imaging Enterprise<sup>+</sup>

## First EIE

Over 1 200 Installations

# The First EIE

## Photoplotters<sup>+</sup>

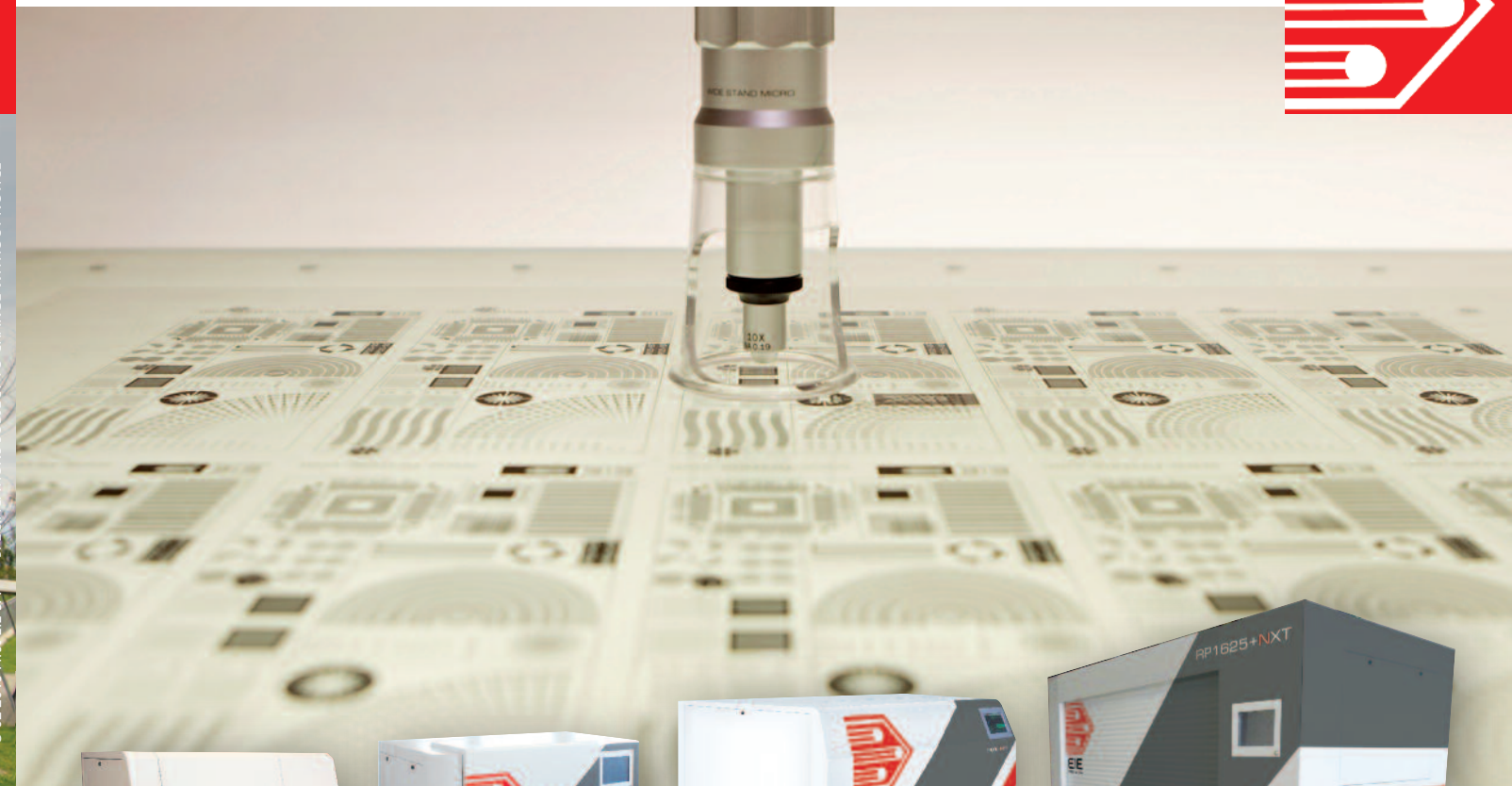
New RP series



Brazil  
Canada  
China  
Czech Republic  
France  
Germany  
Hong Kong  
India  
Italy  
**Japan**  
Korea  
Malaysia

Russia  
Scandinavia  
Singapore  
South Africa  
Spain  
**Switzerland**  
Taiwan  
Thailand  
Turkey  
United Kingdom  
USA  
...

© 02-2019 First EIE SA - SPECIFICATIONS SUBJECT TO CHANGE WITHOUT NOTICE



RP300 series



RP700 series



RP800 series



RP1600 series

**SWISS QUALITY**

First EIE SA • Ch. de la Vuarpillière 27 • CH-1260 Nyon • Switzerland  
Tel. +41 22 307 0630 • sales@FirstEIE.com • www.FirstEIE.com



The True Figures



The True Figures



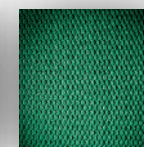
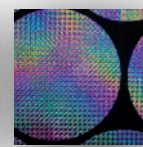


■ No vibrations ■ No film distortion ■ No film fly-off ■ Stability ■ Precision ■ Very rugged ■ Optimized investment ■ Short loading/unloading time ■ Full data compatibility ■ Small foot-print

# Photoplotters LXT, BXT and NXT<sup>+</sup>



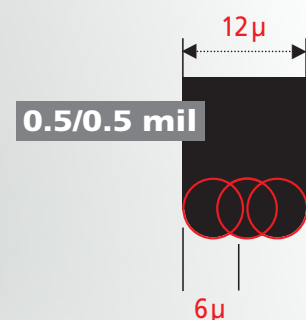
## First EIE SA



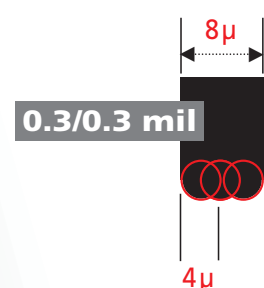
**First EIE SA - The Efficient RP line of photoplotters** retains the same general principles that have made the worldwide reputation of the previous models while introducing a significant leap forward in **speed** and **quality**.

### Most advanced features

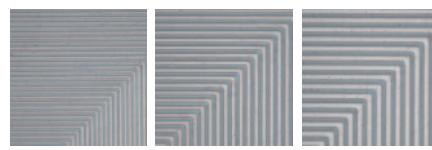
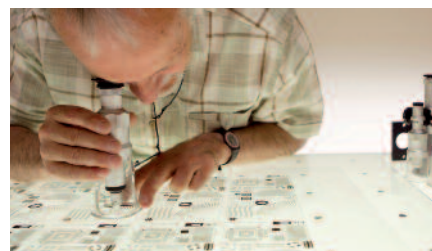
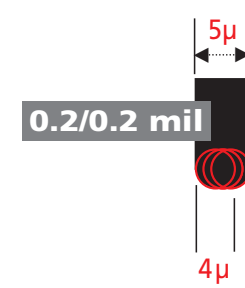
Down to **12 microns lines**  
at **16'000 dpi**



Down to **8 microns lines**  
at **25'000 dpi**



Down to **5 microns lines**  
at **50'000 dpi**



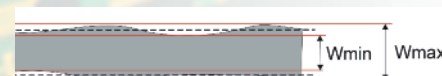
5μ L/S 8μ L/S 10μ L/S

### Single Head 512 Beams

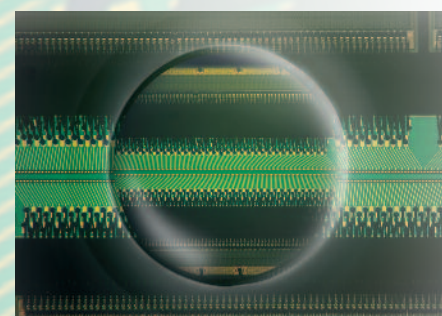
**Unbeatable imaging quality**  
**High throughput**

#### Precise light Beam equalization

The guarantee to produce sharp and very accurate HDI lines and spaces.



Line width variation within 2 μm at 12'000 dpi and above when optimum film processing conditions are met.



### Temperature and humidity monitoring

For constant accuracy and repeatability to compensate the film instability.

### Film instability for a 610 x 508 mm (24" x 20") film size

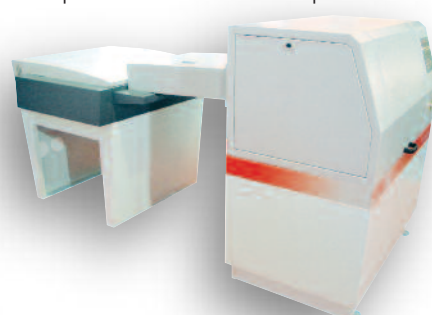
11 μm (0.4 mil) for a 1°C variation  
7 μm (0.3 mil) for a 1% humidity variation

### Automation

**Multiple Format Automatic Film Loader with Automatic Film Counter**



**Film conveyors** for the RP series compatible with most film processors.



### Queue manager user interface

Data input formats : RS274D, RS274X, EIE RPL, DPF, EPS, TIFF and AI (Adobe Illustrator).

### Digital Tablet :

optional for RP300 series, **included** for RP700, RP800 and RP1600 series.

### Optional softwares :

- ODB++ LINK
- AUTOFOS, EIE Postscript RIP
- Panel Pack for full automatic data transfer
- Geometry Correction Software.

### Highest Accuracy

**Remarkable stability and reliability**



With its single STH head, its new electronics and powerful internal computer, the RP series can plot up to four times as fast as its predecessors keeping a maximum drum **rotating speed of 110 rpm**.

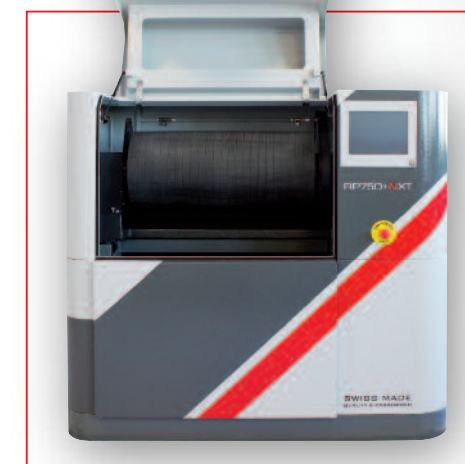
With its established proprietary MRLD array, the STH head with precise beam equalization, available for the RP series gives perfectly **homogeneous** and **sharp spots**. For the high-end metric models it can produce spots as small as 4 μ in order to produce high quality photo tools with **5 μ lines and spaces**.



RP300+LXT series  
660 x 660 mm  
26" x 26"

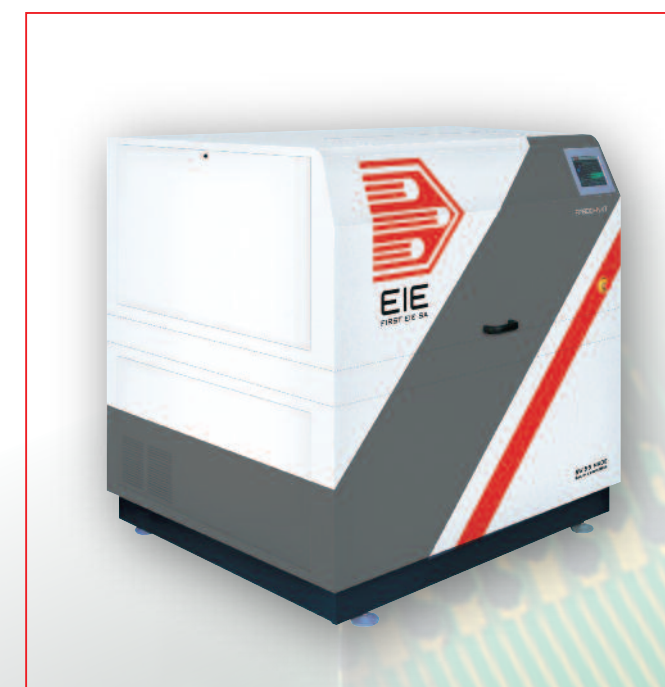
**Cost effective**

RP300+BXT series  
914 x 660 mm  
36" x 26"



RP700+NXT series  
720 x 914 mm 28" x 36"

**High-end**



RP800+BXT and +NXT series  
1422 x 864 mm 56" x 34"

**Large size**



RP1600+NXT series  
2450 x 1600 mm 96" x 63"

**Super large size**