



First EIE SA

General specifications **Circuit Printer** line

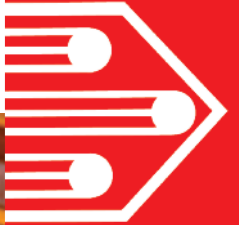
| | | | |
|-------------------------------------|---|---|--------|
| | | | CP562 |
| Printing unit | Max. panel and image size | 660 x 610 mm (26" x 24") | ● |
| | Panel thickness | 0.1 to 5 mm (0.004" to 0.17") | ● |
| | Substrate type | Most common solder masks | ● |
| | Panel holding | First EIE Clamping System with pressure roller | ● |
| | | Vacuum system for flexible circuits | Option |
| | Printing device | First EIE IMH512 | ● |
| Legend Ink | Ink Type | UV or thermally curable. See specific technical data sheets | ● |
| UV pinning system | On-the-fly UV curing system for liquid ink | | ● |
| Built-in Raster Image Processor | Data input formats | RS274D, RS274X, DPF and EIE RPL | ● |
| | Optional input formats | ODB++, PostScript, TIFF-PACKBITS, PDF, AI | Option |
| | Via third party software | DXF, DWG, other upon request | Option |
| | Network compatibility | Network File System TCP-IP | ● |
| User Interface | Windows-based, including First EIE MPS and Print Queue Manager Software | | ● |
| Wizards | For equipment easy calibration and adjustment | | ● |
| Panel Alignment and Registration | Manual with locating pins | | ● |
| | Fully automatic registration and alignment using on-board CCD camera | | ● |
| Elevation Table | Customized according to panels size up to 610 x 550 mm (24" x 21.5") | | ● |
| Vacuum | Fixture for flexible circuits | | Option |
| Serialization Dynamic legend | Serial numbers, time-code, barcodes 1D or 2D (QR-Code, DataMatrix and others) by D-code mapping | | Option |
| Print Modes | High speed | Minimum line width : 100 μ | ● |
| | Standard | Minimum line width : 100 μ | ● |
| | High quality | Minimum line width : 75 μ | ● |
| Print Time (Image size : 20" x 16") | From 30 to 78 sec | Depends on ink type and printing mode | ● |
| Overall Accuracy | ± 30 μm (± 1.2 mil) | | ● |
| Repeatability | ± 10 μm (± 0.3 mil) | | ● |
| Operating Conditions | Temperature - relative humidity | 23± 5° C - 50% ± 10% (non-condensing) | ● |
| | Power requirements | 230 VAC ± 10%, 1400 W | ● |
| | Power consumption | 400 VA | ● |
| | Compressed air | Minimum : 6 bars, 56L/min (60 psi, 2 cfm) | ● |
| Size and Weight | Width x depth x height | 1435 x 1760 x 1410 mm | ● |
| | Weight | 450 kg (993 lbs) | ● |

■ Accuracy ■ Simplicity ■ Reliability ■ Throughput ■ Data processing experience ■ Flex material compatibility

Legend Inkjet Printer 

CP562

Operator-Friendly



© 08 2018 First EIE SA SPECIFICATIONS SUBJECT TO CHANGE WITHOUT NOTICE



First EIE SA • Ch. de la Vuarpillière 27 • CH-1260 Nyon • Switzerland
Tel. +41 22 307 0630 • sales@FirstEIE.com • www.FirstEIE.com

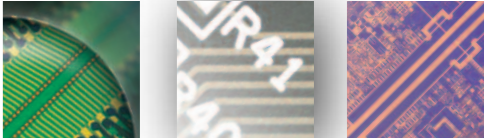


The True Figures



SWISS QUALITY
660 x 610 mm 26" x 24"

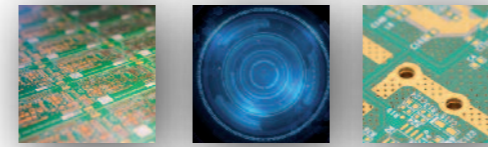
The True Figures



■ Low power consumption ■ Simplicity ■ Reliability ■ Throughput ■ Flexibility ■ Quick set-up ■ No tooling ■ Scaling registration ■ Serialization

Circuit Printer⁺ First EIE SA

CP562 IMH512 Features



First EIE CP562, the third generation Legend Inkjet Printer is capable of printing up to 60 panels (20 x 24") per hour at **75 micron** lines and spaces.

The CP562 benefits from the **wide expertise of First EIE**, a leading supplier of photoplotting and ink jet printing solutions.

First EIE, Clamping System



Warpage compensation

No longer a critical problem with the latest CP400 and CP500 series elevation table. The Elevation table clamps the panel edges and keeps the print surface at **the same height** whatever the panel thickness.

Panel placed on table



Print Head
Head to Clamp
Fixed Distance

Clamps are closed

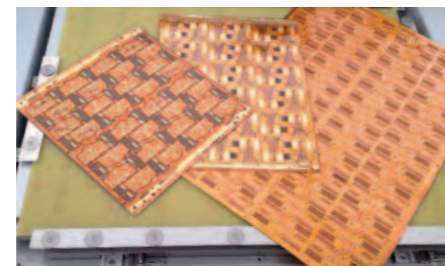
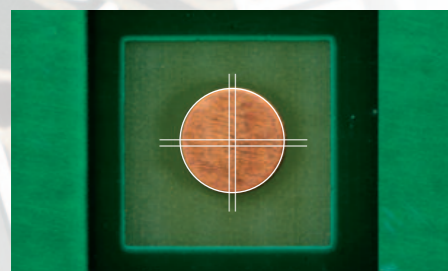


Table raises and presses the panel against clamps



Print Head

Legend Registration

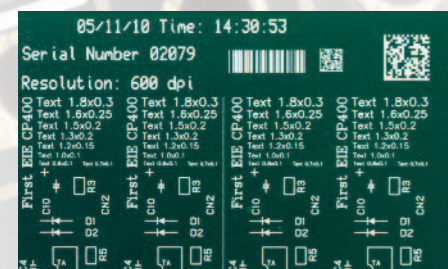


Several Registration modes

are available :

- Fully automated using on-board CCD camera and target recognition software
- Pin alignment for fastest throughput
- Combination of both above modes.

Serialization Dynamic Legend



The CP562 is able to print dynamic markings linked to legend files. The markings are easily programmed by D-code mapping or by using our dedicated **SERIMARK** software interface.



UV or Thermally Cured Legend Inks

Optimal adhesion on most common solder masks

The new IMH512 Print Head is compatible with most jettable Legend Inks, **UV or thermally** cured, of different colors.

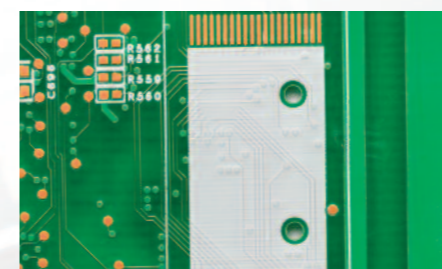
Extensive production tests have shown very good legibility, remarkable ink colour density **with one single printing pass** with high contrast.



See specific technical data sheets

Supported Markings :

- Date and time
- Scale factors
- Serial numbers
- Keyboard inputs
- Text
- 1D, 2D barcodes.



IMH512 Printing Head

More robust and less clogging

The CP562 integrates its established proprietary IMH512 Print Head based on a reliable Drop on Demand System of continuous 512 jets. Controlled by an advanced electronic technology, this engine jets the legend ink at very high frequency in "single wall" mode allowing to fire all **512 jets at the same time**.

It delivers well aligned drops with an optimum mass ensuring uniform and well contrasted prints with most jettable inks.

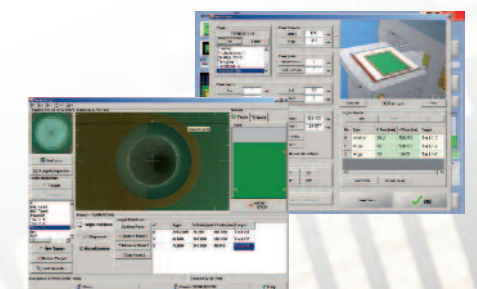


Main features

- Temperature regulation for compatibility with most UV / thermal Inks
- UV pinning system option
- Autonomous ink recycling system
- Automatic head maintenance
- Modular design for easy servicing.

MPS Software and User Interface

The CP562 MPS software offers a very user-friendly interface and superior flexibility. It brings to the CP562 the vast experience of First EIE in data interpretation and processing. A number of software wizards are available to safely and quickly perform re-calibrations and adjustments when necessary.



3 Print modes

High Speed

Highest throughput and good print quality.

Standard

Very good quality at standard speed.

High Quality

For enhanced definition.

