

■ Reliability ■ Stability ■ Precision ■ Competitive cost ■ Short loading ■ Unloading time ■ Full data compliance

Please visit our website...  
**www.FirstEIE.com**  
 Present in your country

- Brazil
- Canada
- China
- Czech Republic
- France
- Germany
- Hong Kong
- India
- Italy
- Japan**
- Korea
- Malaysia
- Russia
- Scandinavia
- Singapore
- South Africa
- Spain
- Switzerland**
- Taiwan
- Thailand
- Turkey
- United Kingdom
- USA
- ...



The Efficient line Photoplotters   
**+SXTseries**  
 Accuracy & Reliability



© 10 2016 First EIE SA SPECIFICATIONS SUBJECT TO CHANGE WITHOUT NOTICE



**SWISS QUALITY**  
 RP700+SXT 50'000 dpi  
**NEW**

First EIE SA • Ch. de la Gravière 2 • CH-1227 Geneva • Switzerland  
 Tel. +41 22 307 0630 • sales@FirstEIE.com • www.FirstEIE.com



The True Figures



The True Figures



■ No vibrations ■ No film distortion ■ No film fly-off ■ Reliability ■ Stability ■ Precision ■ Very rugged ■ Competitive cost ■ Short loading/unloading time ■ Full data compatibility ■ Small foot print

# Photoplotters SXT

## First EIE SA

**+ Super Speed + Technology**



### First EIE SA - The Efficient SXT line of photoplotters

retains the same general principles that have made the worldwide reputation of the previous models while introducing a significant leap forward in **speed** and **exposure**.

With its single STH head, its new electronics and powerful internal computer, the RP+SXT series can plot up to four times as fast as its predecessors keeping a maximum drum **rotating speed of 110 rpm**.

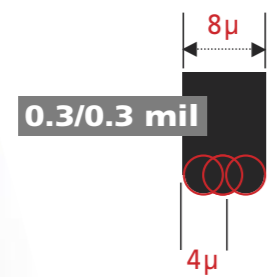
With its established proprietary MRLD array, the SDH head with precise beam equalization, available for the RP+SXT series gives perfectly **homogeneous** and **sharp spots**. For the high-end metric models it can produce spots as small as 4 μ in order to produce high quality photo tools with **5 μ lines and spaces**.

### Most advanced features

Down to **12 micron lines** at **16'000 dpi**

Down to **8 micron lines** at **25'000 dpi**

Down to **5 micron** at **50'000 dpi**



### Single Head 512 Beams

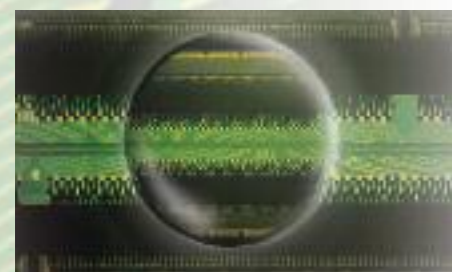
**Unbeatable imaging quality**

#### Precise light Beam equalization

The guarantee to produce sharp and very accurate HDI lines and spaces.



Line width variation within 2 μm at 12'000 dpi and above when optimum film processing conditions are met.



#### Temperature and humidity monitoring

For constant accuracy and repeatability to compensate the film unstability.

#### Film instability for a 610 x 508 mm (24" x 20") film size

11 μm (0.4 mil) for a 1°C variation  
7 μm (0.3 mil) for a 1% humidity variation



RP200+SXT 660 x 520 mm  
26" x 20.5"



RP300+SXT 914 x 660 mm  
36" x 26"



RP700+SXT 720 x 914 mm  
28" x 36"

#### Perfect Environment Control

- Temperature and humidity monitoring
- Geometry control
- Dust protection

#### Vertical high capacity Auto-loading system

- 1 x 150 films
- 2 x 150 films
- Maximum film size : 28" x 36"

#### High throughput

- 4'000 to 50'000 dpi
- 512 beam STH head



### Automation

#### Multiple Format Automatic Film Loader with Automatic Film Counter

**Film conveyor C200** for the RP200+SXT series.

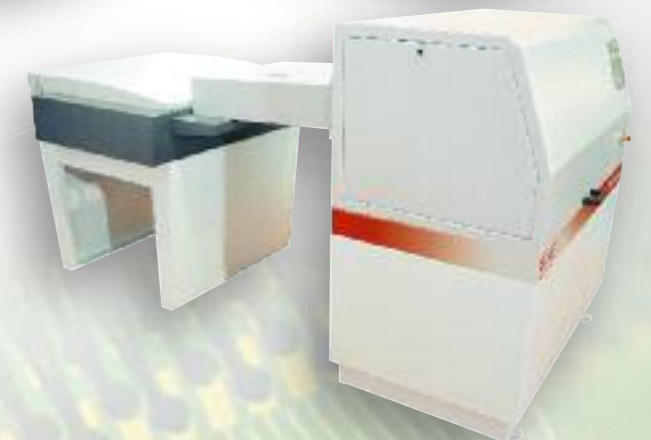


**Film conveyor C300B** for the RP300+SXT series  
**C700** for the RP700+SXT series.



#### Films Conveyor

compatible with most film processors.



### Highest Accuracy

**Remarkable stability and reliability**



#### Queue manager user interface

Data input formats : RS274D, RS274X, EIE RPL and DPF.

Optional softwares : ODB++ LINK, AUTOFOS and EIE Postscript RIP.