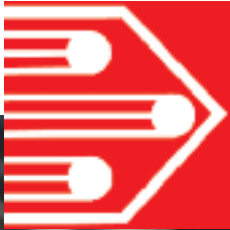


■ Up to 50'000 dpi ■ Reliability ■ High plotting speed ■ High accuracy

# Photoplotters +XT +SXT series RP800

**Large size**



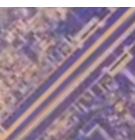
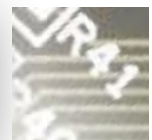
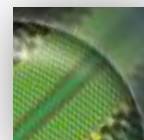
**SWISS QUALITY**

1422 x 864 mm 56" x 34"



Inspec Group

The True Figures



# General Specifications

		RP812+XT	RP816+SXT RP817+SXT	RP824+SXT RP825+SXT	RP848+SXT RP850+SXT
<b>Exposing Unit</b>	Max. Exposure area	1422 x 864 mm (56" x 34")	●	●	●
	Compatible film lengths	26", 30", 32", 36", 38", 42", 48", 54" and 56"	●	●	●
	Compatible film widths	Any width larger than 508 mm (20") up to 864 mm (34")	●	●	●
	Film thickness	0.18 mm (7 mils)	●	●	●
	Film holding	By vacuum	●	●	●
	Drum speed	Variable, up to 65 RPM	●	●	●
	Exposure device	One 512 beam STH3 head with light intensity equalization	●	●	●
	Light wavelength	Monochromatic red light, 647 nm	●	●	●
	Position control	Through high resolution encoder and glass scale	●	●	●
<b>Built-in Raster Image Processor</b>	Data input formats	RS274D, RS274X, DPF and EIE RPL	●	●	●
	Optional input formats	ODB++, PostScript, TIFF-PACKBITS, PDF	Option	Option	Option
	Via third party software	DXF, DWG, other upon request	Option	Option	Option
	Network compatibility	Network File System TCP-IP	●	●	●
<b>User Interface</b>	Queue Manager Software supporting 30 plot queues. Each one can be setup with more than 15 different plot parameters	●	●	●	●
<b>Environment monitoring</b>	Temperature and humidity recorded for each plot	Option	●	●	●
<b>Single size integrated autoloader</b>	Compatible film lengths	26", 30", 32", 36", 38", 42", 48", 54" and 56"	●	●	●
	Compatible film widths	Any width larger than 508 mm (20") up to 864 mm (34")	●	●	●
	Film magazine	Up to 50 films with automatic film counter	●	●	●
	Load / unload cycle	50 / 40 sec. for maximum film size	●	●	●
	Daylight operation	Yes, except during film refill and removal	●	●	●
<b>Size and Weight</b>	Length x width x height	1600 x 1160 x 1700 mm (63" x 46" x 67")	●	●	●
	Weight	650 kg (1450 lbs) including autoloader	●	●	●
<b>Operating Conditions</b>	Temperature	20 ± 2° C	●	●	●
	Relative humidity	45% ± 3%	●	●	●
	Power requirements	230 VAC ± 10%, 1400 W including vacuum pump	●	●	●
<b>Optional Film Conveyor C800</b>	Compatibility	Compatible with most film processors	●	●	●
	Length x width x height	1676 x 915 x 140 mm (66" x 36" x 5.5")	●	●	●
	Weight	80 kg (178 Lbs)	●	●	●
<b>Spot size and selectable resolution</b>	6 µm (0.24 mil)	4'000, 8'000 and 12'000 dpi	●		
	6 µm (0.24 mil)	4'000, 8'000, 12'000 and 16'000 dpi		●	
	4 µm (0.16 mil)	6'000, 12'000, 18'000, 24'000 dpi and 48'000 dpi			●
<b>Exposure speed (For a 54" x 20" plot)</b>	<b>FOR IMPERIAL MODE</b>	Minutes at 4'000 dpi	3.0	3.0	
		Minutes at 6'000 dpi			3.6
		Minutes at 8'000 dpi	4.8	4.8	
		Minutes at 12'000 dpi	7.2	7.2	7.2
		Minutes at 16'000 dpi		9.6	
		Minutes at 18'000 dpi			11.9
		Minutes at 24'000 dpi			21.7
		Minutes at 48000 dpi			42.6
	<b>FOR METRIC MODE</b>	Minutes at 6µm	3.1	3.1	
		Minutes at 4µm			3.8
		Minutes at 3µm	5.1	5.1	
		Minutes at 2 µm	7.6	7.6	7.6
	Minutes at 1.5 µm		7.8		
	Minutes at 1.33 µm			13.5	
	Minutes at 1 µm			24.3	
	Minutes at 0.5 µm			45.5	
<b>Overall Accuracy</b>	± 20 µm (± 0.78 mil)	●	●	●	●
<b>Repeatability</b>	± 5 µm (± 0.2 mil)	●	●	●	●
<b>Minimum line width</b>	35 µm (1.4 mil) at 4'000 dpi	●	●		
	20 µm (0.8 mil) at 8'000 dpi	●	●		
	12 µm (0.5 mil) at 12'000 dpi		●	●	●
<b>Line width variation</b>	Less than 4 µm peak to peak at 4'000 dpi	●	●		
	About 3 µm peak to peak at 12'000 dpi	●	●	●	●
	About 2 µm peak to peak at 16'000 dpi and above		●	●	●



First EIE SA • Ch. de la Gravière 2 • CH-1227 Geneva • Switzerland  
Tel. +41 22 307 0630 • sales@FirstEIE.com • www.FirstEIE.com



The True Figures