
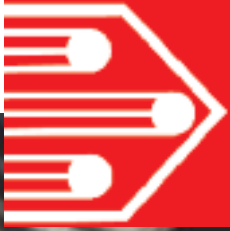


■ Up to 25'000 dpi ■ Reliability ■ High plotting speed ■ High accuracy

Photoplotter +SXT series 

# RP1600

**Super large size**

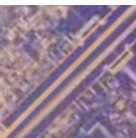
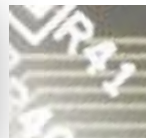
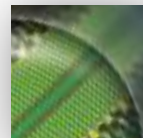


**SWISS QUALITY**

2450 x 1600 mm 96" x 63"



The True Figures



# Preliminary Specifications

RP1625+SXT

<b>Exposing Unit</b>	Max. Exposure area	2450 x 1600 mm (96" x 63")	●
	Compatible film lengths	From 1016 mm (40") to 2450 mm (96")	●
	Compatible film widths	Any width larger than 762 mm (30") up to 1600 mm (63")	●
	Film thickness	0.18 mm (7 mils)	●
	Film holding	By vacuum	●
	Drum speed	Variable, up to 100 RPM	●
	Exposure device	512 beam STH3 head with light intensity equalization	●
	Light wavelength	Monochromatic red light, 647 nm	●
	Drum position control	High resolution encoder	●
<b>Built-in Raster Image Processor</b>	Data input formats	RS274D, RS274X, DPF and EIE RPL	●
	Optional input formats	ODB++, PostScript, TIFF-PACKBITS, PDF	Option
	Via third party software	DXF, DWG, other upon request	Option
	Network compatibility	Network File System TCP-IP	●
<b>User Interface</b>	Queue Manager Software supporting 30 plot queues. Each one can be setup with more than 15 different plot parameters		●
<b>Integrated Autoloader</b>	Compatible film lengths	From 1016 mm (40") to 2450 mm (96")	●
	Compatible film widths	Any width larger than 762 mm (30") up to 1600 mm (63")	●
	Film magazine	Up to 1 x 15 films with automatic film counter	●
	Load / unload cycle	45 / 60 sec. for maximum film size	●
	Daylight operation	Yes, except during film refill and removal	●
<b>Size and Weight</b>	Length x width x height	1400 x 2430 x 2005 mm (55.1" x 95.7" x 78.9")	●
	Weight	1100 kg (2425 lbs) including autoloader	●
<b>Operating Conditions</b>	Temperature	20 ± 2° C	●
	Relative humidity	45% ± 3%	●
	Power requirements	230 VAC ± 10%, 1400 W including vacuum pump	●
<b>Optional Film Conveyor C1000</b>	Allows the direct transfer of exposed films to the film processor in daylight condition. Can be connected on site between the back of the photoplotter and the entrance of the film processor. Max film Width 1600 mm (63")		●
<b>Autoloader</b>	Yes		●
<b>Spot size</b>	4 µm (0.16 mil)		●
<b>Selectable resolutions</b>	6'000, 12'000, 18'000 and 24'000 dpi		●
	4µ, 2µ, 1.33µ and 1µ		●
<b>Carriage position control</b>	Linear glass scale		●
<b>Overall Accuracy</b>	± 30 µm (± 1.2 mil)		●
<b>Repeatability</b>	± 5 µm (± 0.12 mil)		●
<b>Minimum line width</b>	35 µm (1.4 mil) at 4'000 dpi		●
	20 µm (0.8 mil) at 8'000 dpi		●
	12 µm (0.5 mil) at 12'000 dpi		●
<b>Line width variation</b>	Less than 4 µm peak to peak at 4'000 dpi		●
	About 3 µm peak to peak at 8'000 dpi		●
	About 2 µm peak to peak at 12'000 dpi		●

© 10 2016 First EIE SA SPECIFICATIONS SUBJECT TO CHANGE WITHOUT NOTICE



First EIE SA • Ch. de la Gravière 2 • CH-1227 Geneva • Switzerland  
Tel. +41 22 307 0630 • sales@FirstEIE.com • www.FirstEIE.com



The True Figures